

Topcon Value Line Steering

Autosteering Solution



Automatic guidance technology designed for all operations.



Learn more at topconpositioning.com

 **TOPCON**
For Work That Matters™

Big Farm Technology. Small Farm Affordability.

Elevate your farming efficiency with cutting-edge autosteering technology designed for farms and budgets of all sizes. With Value Line Steering, experience proven precision and ease of automatic steering for your front wheel assist and front wheel steer tractors.

Value Line works with nearly every brand machine, making it the perfect fit for your farming needs. Designed for reliability, it's affordable, user-friendly, and backed by expert support. Enhance crop yields, accuracy, and efficiency while reducing operator fatigue.

- » Position-based (GNSS) automatic steering for many agricultural machines
- » Reliable hardware - receivers, controllers, and displays
- » Range of accuracy options upon operational needs
- » High quality at an accessible price for every operation



Reduce Key Inputs



Empower Labor



Improve Fertility and Yield



Correction Services

Options for every scenario



GNSS Receiver

Reliable positioning



Electric Steering Wheel

Powerful hands-free control



Display

Smart touchscreen console



Powerful steering in a straightforward package

Topcon offers flexibility. Whether it's simply steering or control of other key precision agriculture solutions, we have a clear path to guide you there. Through Value Line Steering, you get access to any steering pattern you

need, plus more advanced features including Steer to Boundary, Guidelock and Headland Turns. Even control basic ISOBUS implements through ISOBUS-UT functionality.

Modern Touchscreen Consoles Options



XC1 plus (10" display)

Reliable GNSS Receiver



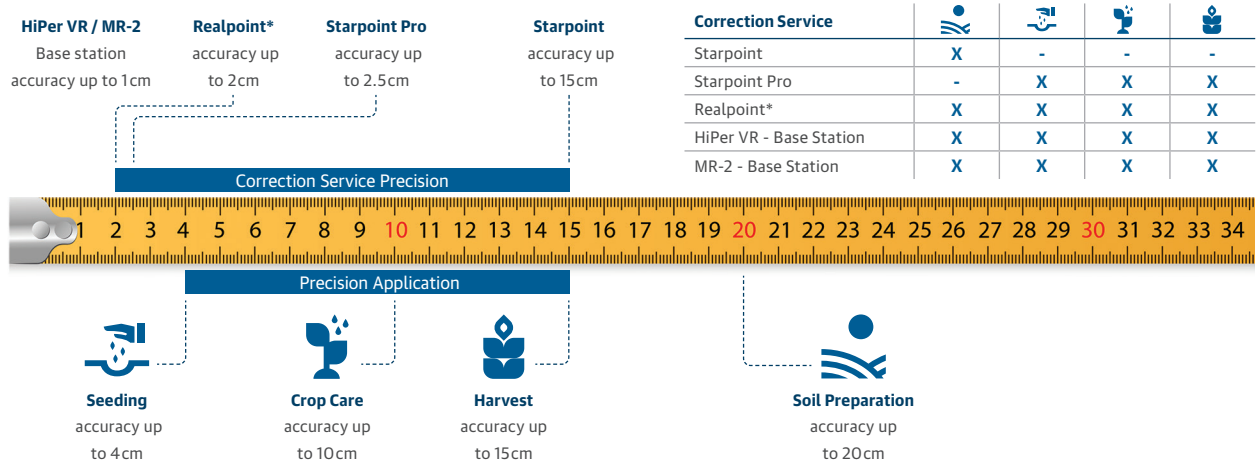
XR-1

Powerful Electric Steering Wheel



XW-1

How precise do you need to be?



*Local coverage varies, confirm availability with local dealer (Preferred cellular source as Cloudlynk device (CL-20 and CL-55) and TAP NTRIP)

We offer guidance patterns for every application



Steer smart with relevant features



Virtual Wheel Angle Sensor

To reduce system costs and simplify setup, we've developed a new digital approach to enhance autosteering performance. Previously requiring a mechanical wheel angle sensor, Value Line Steering introduces integrated software that matches the benefits in most conditions without the need for an additional hardware installation.



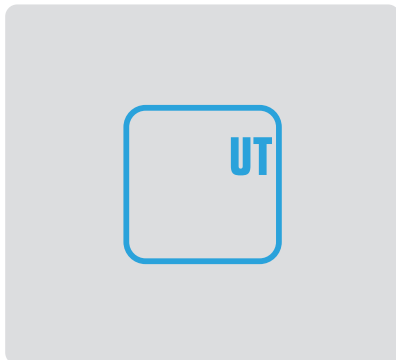


Easy-to-use in-cab operating software

Topcon in-cab operating software (Horizon Lite OS) is all about efficiency and connectivity. Its easy usability makes setup efficient and operators confident.

Virtual Implement Mapping

Generates a precise digital model of the equipment in use, optimizing field coverage and minimizing waste by preventing overlaps. The auto section control feature can be used to mimic an implement with sections which must be manually switched by the operator.



ISOBUS-UT

Display compatibility for ISOBUS protocol solutions. Basic control using ISOBUS-UT functionality.

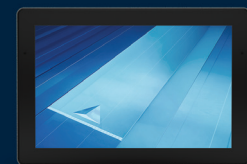
Lean on reliable dealer networks including remote support

Our trained dealers and extensive support network is here to help. Our remote support capability, allowing

3rd parties to connect to your display make it even more efficient.



Remote Support



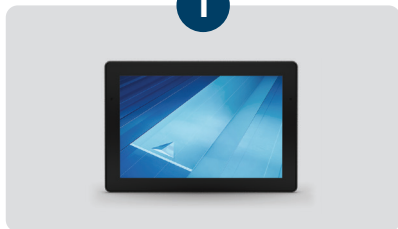
Collect data and make better decisions with our cloud software, the Topcon Agriculture Platform (TAP)

Designed for farmers, dealers, agronomists, and input suppliers who need to gather and consolidate key operational information, the Topcon Agriculture Platform (TAP) brings connectivity to every phase of the farming cycle. TAP is a simple tool to organize, visualize, and automate information, helping farmers make better decisions based on data from across the entire operation. With TAP, we now offer a comprehensive and clear path into digital farm management.



Easily connect consoles to our cloud software

1



Console

Easily connect your XC1 plus console to the Topcon Agriculture Platform.

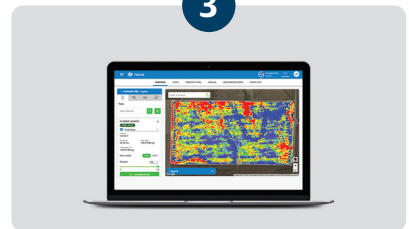
2



Data Transfer

Plug-in a CL-20 Cloudlynk data transfer device to seamlessly transfer data to TAP via cellular networks. Alternatively, use our Wi-Fi dongle or even a classic USB to manually transfer data.

3



Topcon Agriculture Platform (TAP)

Automatically ingests data through the CL-20 or manually via Wi-Fi or USB, helping you organize, visualize and make better decisions.

Flexible subscriptions and powerful addons



TAP Fields

Easily organize, visualize, and decide.



TAP Pro

Streamline transfer and track the fleet.



Satellite imagery

Measure crop and field health for insights that lower risk.

Automate key applications through complementary Topcon ISOBUS solutions



Tillage Depth Control

Maintain a pre-set depth for consistent and repeatable tillage.



Boom Height Control

Maintain a pre-set height to optimize applications and reduce drift.

Designed with Quality in Mind

With over 20 years in steering solutions, you can expect easy-to-use technology, smart features, reliable global support, and a path to guide you to the next level on

your precision agriculture journey.

Engineered for excellence, we leverage facilities across the globe to develop high quality solutions.





Compatible with front wheel assist and front wheel steer tractors

Value Line Steering is compatible with most front wheel assist and front wheel steer tractors. Our solution is capable in even the most challenging conditions, equipped with advanced terrain compensation technology.

Do you need more than steering and basic ISOBUS control?

Beyond Value Line Steering, we offer more advanced steering solutions tied to automating many key activities throughout the crop cycle. Checkout Premium Line Steering for full access to our complementary crop production solutions to make your operation even more efficient.



How can your operation benefit from autosteering?



Maximize Land



Reduce Fuel and Maintenance



Reduce Operator Error and Improve Skill



Optimize Application Inputs (E.g., Fertilizer)



Operate 24/7



Enable Precision Technology



LH Agro (UK) Ltd
56 Edison Road
St Ives
Cambs. PE27 3LF
Tel: 01480 496367 Email: sales@lh-agro.co.uk



Specifications subject to change without notice.
© 2024 Topcon Corporation. All rights reserved. 7010-2418 EU A 09/24

Learn more at topconpositioning.com


For Work That Matters™